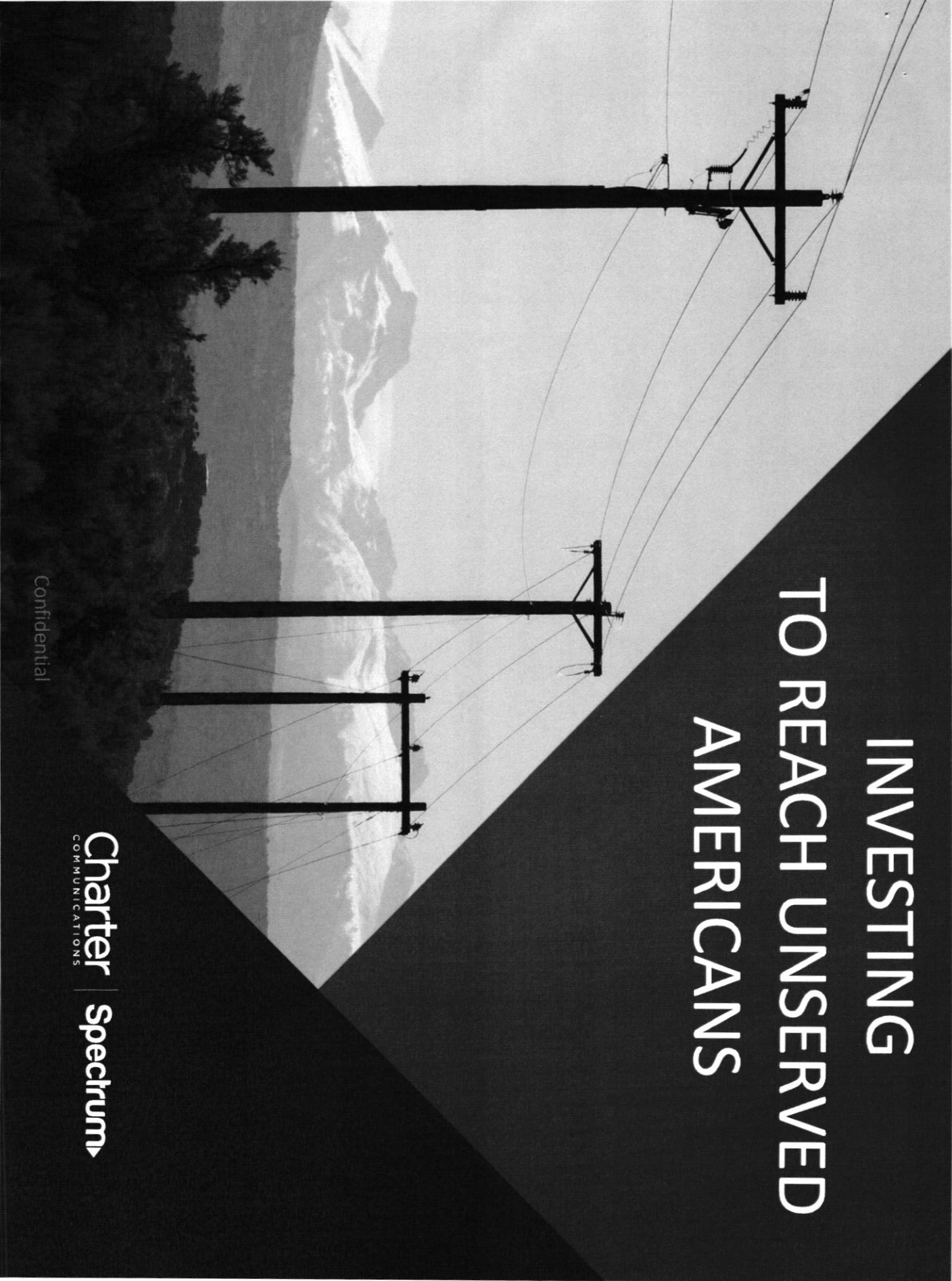


# Rural Digital Opportunity Fund (RDOF)

**Sabine County**

**January 27, 2025**



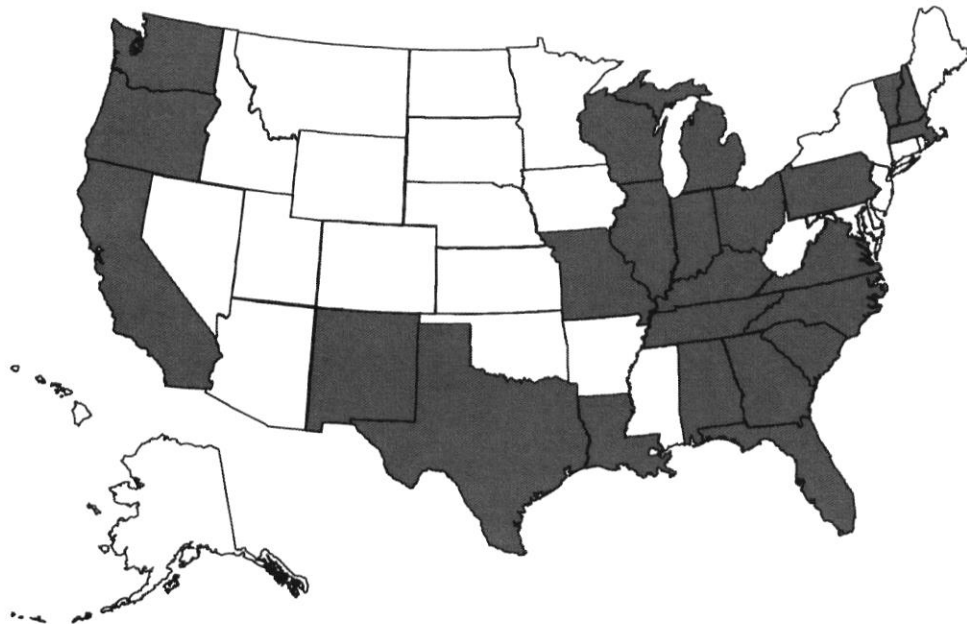
# INVESTING TO REACH UNSERVED AMERICANS

Confidential

Charter  
COMMUNICATIONS | Spectrum

# POWERING OPPORTUNITY FROM COAST TO COAST

A \$5 Billion Initiative to Connect Unserved Americans  
to Reliable, High-Speed Broadband



More Than

# 1 million

Unserved Homes &  
Small Businesses Reached \*

# \$5 billion

Total Investment

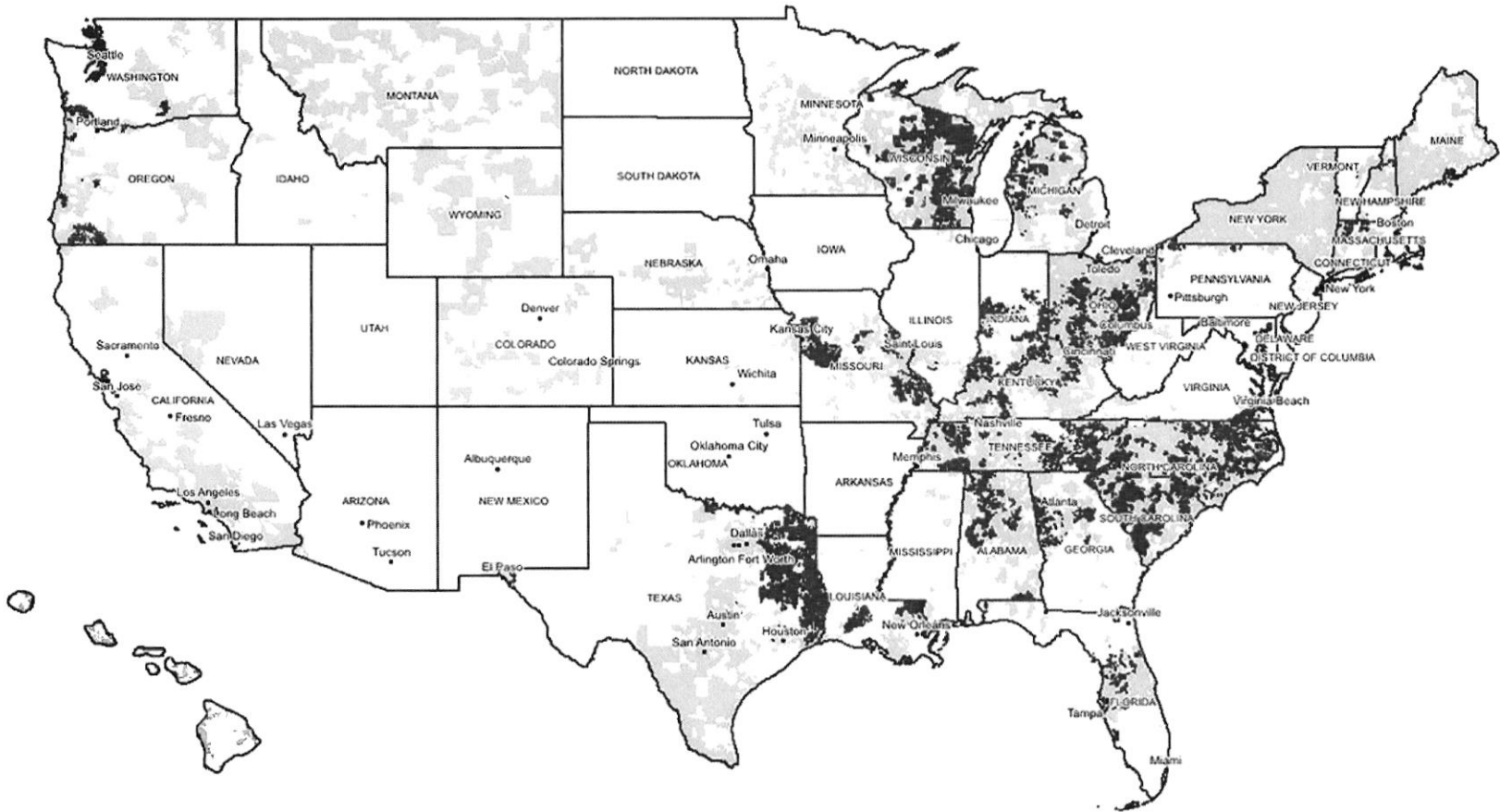
# 24

States

# +115,000

Miles of Network Infrastructure

\* AS ESTIMATED BY THE FEDERAL COMMUNICATIONS COMMISSION



- Current Footprint
- Rural Digital Opportunity Fund Census Blocks Won

**Charter**  
COMMUNICATIONS

**Charter** | **Spectrum** Confidential

Over the next seven years or so, Charter will add significant resources to our construction efforts focused solely on adding around

# 115,000 MILES

OF NETWORK INFRASTRUCTURE



AN EXTENSION LONG ENOUGH TO CIRCLE THE GLOBE

# MORE THAN 4.5 TIMES

# NETWORK TECHNOLOGY & SPEEDS

- ▶ Charter's RDOF build will be FTTH at speeds of up to 1 gig down, 500 Mbps up
- ▶ Today, Spectrum Internet delivers minimum speeds of at least 200 Mbps in nearly 85% of our footprint and 100 Mbps across the remainder
- ▶ Spectrum Internet offers fast, reliable service with no modem fees, no contracts, and no data caps

 **1000**  
Mbps

 **500**  
Mbps

# BUILDING INFRASTRUCTURE & INVESTING IN TECHNOLOGY

- ▶ In the coming months we will develop our deployment plans that will reflect extending our network from our existing footprint in various areas.
- ▶ Charter is required to service all homes in the awarded Census Block Groups. Field walkout & Network planning is already in progress.
- As we prepare our deployment plans our goal is to perform outreach to all impacted government permitting agencies and pole owners.
- The timely execution depends on building effective working relationships with all pole owners and municipal, county and state agencies.
- ▶ Network construction is dependent on many external factors such as, Pole Attachment agreements, Pole applications, Make-ready construction and Underground permitting.

Over the past 5 years,  
Charter has invested nearly

**\$40  
BILLION**

in American Infrastructure  
and Technology.

2016-2020



## FCC RDOF Build – Out Requirements

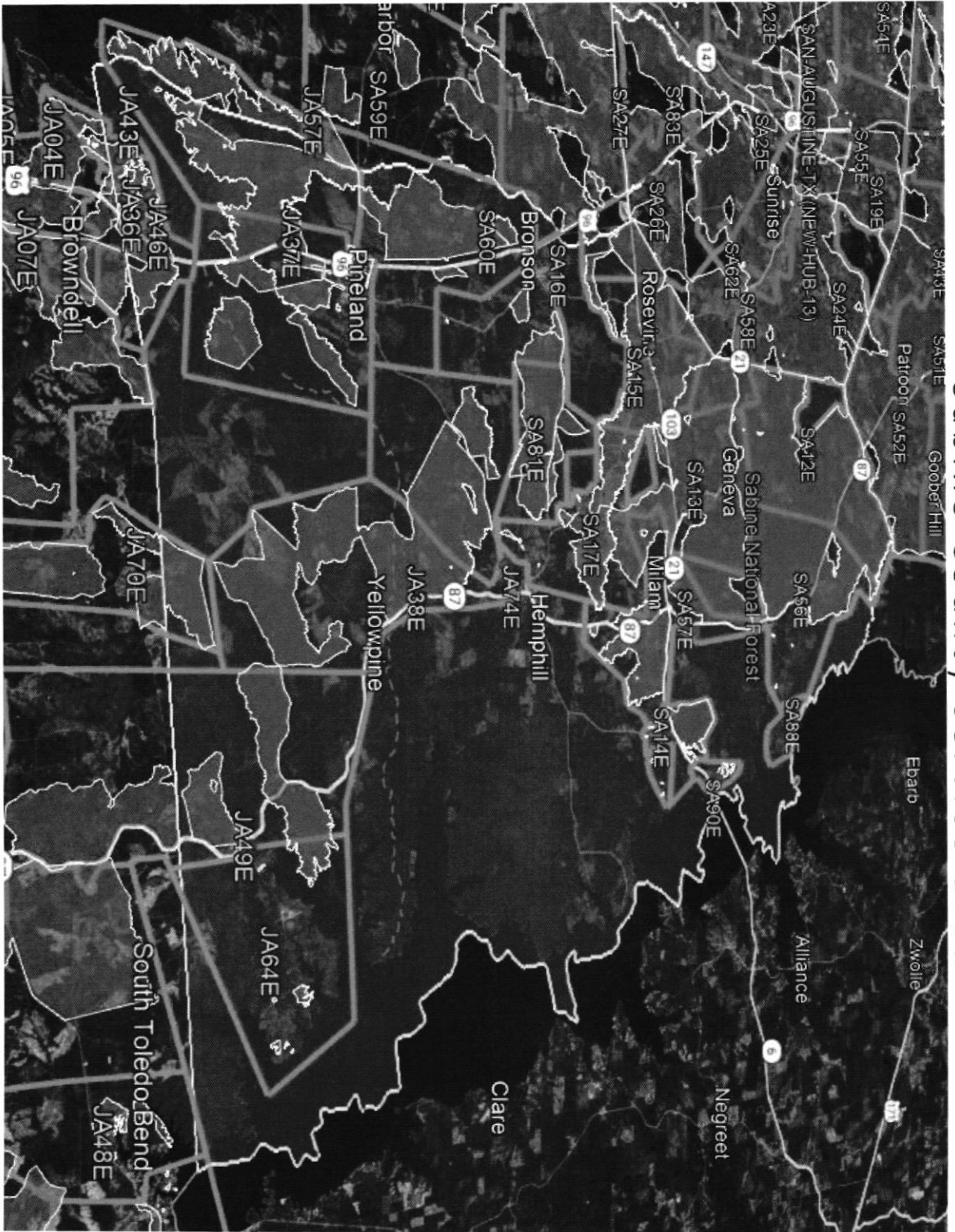


- Winning Bidder Must Build-Out:
  - 40% of passings must be constructed by year 3 ➡ Dec 31, 2024
  - 60% of passings must be constructed by year 4 ➡ Dec 31, 2025
  - 80% of passings must be constructed by year 5 ➡ Dec 31, 2026
  - 100% of passings must be constructed by year 6 ➡ Dec 31, 2027
- Build-Out Compliance: Evaluated at the state level, not the CBG level
- Passing is “Served” for Purposes of Build-Out Requirement: If a customer can receive the speed/latency bid within 10 business days of a request for service
- Updated Passings: The FCC will update the number of passings in each CBG by 2027; if there are more, we will have until Year 8 to offer service to 100% of passings; if there are fewer, we will have until Year 6 to offer service to 100%



RDOF Build Dedicated Team	State	CBGs	FCC Eligible Locations	Miles	Miles per Year	Miles per Month	FCC Loc. per Mile
Carolinas	North Carolina	716	128,509	12,349	2,058	172	10.4
Carolinas	South Carolina	597	98,670	10,267	1,711	143	9.6
<b>Carolinas Subtotal</b>		<b>1,313</b>	<b>227,179</b>	<b>22,616</b>	<b>3,769</b>	<b>314</b>	<b>10.0</b>
MI-IN	Indiana	320	54,541	6,519	1,086	91	8.4
MI-IN	Michigan	181	35,944	2,904	484	40	12.4
<b>MI-IN Subtotal</b>		<b>501</b>	<b>90,485</b>	<b>9,423</b>	<b>1,570</b>	<b>131</b>	<b>9.3</b>
OH-KY	Ohio	621	112,777	13,332	2,222	185	8.5
OH-KY	Kentucky	185	31,747	4,025	671	56	7.9
<b>OH-KY Subtotal</b>		<b>806</b>	<b>144,524</b>	<b>17,357</b>	<b>2,893</b>	<b>241</b>	<b>8.3</b>
Southeast	Tennessee	422	79,193	9,277	1,546	129	8.5
Southeast	Alabama	246	56,451	6,057	1,009	84	9.3
Southeast	Georgia	172	23,854	2,830	472	39	8.4
Southeast	Florida	131	17,869	1,771	295	25	10.1
<b>Southeast Subtotal</b>		<b>971</b>	<b>177,367</b>	<b>19,935</b>	<b>3,323</b>	<b>277</b>	<b>8.9</b>
TX-LA	Texas	605	133,993	14,305	2,384	199	9.4
TX-LA	Louisiana	109	25,389	2,699	450	37	9.4
<b>TX-LA Subtotal</b>		<b>714</b>	<b>159,382</b>	<b>17,004</b>	<b>2,834</b>	<b>236</b>	<b>9.4</b>
WI-MO	Missouri	276	61,524	6,970	1,162	97	8.8
WI-MO	Wisconsin	554	143,269	15,524	2,587	216	9.2
<b>WI-MO Subtotal</b>		<b>830</b>	<b>204,793</b>	<b>22,494</b>	<b>3,749</b>	<b>312</b>	<b>9.4</b>
<b>RDOF Dedicated Teams Subtotal</b>		<b>5,135</b>	<b>1,003,730</b>	<b>108,829</b>	<b>18,138</b>	<b>1,512</b>	<b>9.2</b>
n/a	Oregon	60	15,139	1,693	282	24	8.9
n/a	Virginia	38	11,369	1,559	260	22	7.3
n/a	Massachusetts	42	14,344	908	151	13	15.8
n/a	Washington	20	4,625	571	95	8	8.1
n/a	Pennsylvania	35	5,328	443	74	6	12.0
n/a	New Hampshire	7	1,044	109	18	2	9.6
n/a	Illinois	6	501	77	13	1	6.5
n/a	California	15	1,045	65	11	1	16.1
n/a	New Mexico	4	485	41	7	1	11.7
n/a	Vermont	4	85	8	1	0	10.7
<b>n/a Subtotal</b>		<b>231</b>	<b>53,965</b>	<b>5,474</b>	<b>912</b>	<b>76</b>	<b>9.9</b>
<b>Total</b>		<b>5,366</b>	<b>1,057,695</b>	<b>114,303</b>	<b>19,051</b>	<b>1,588</b>	<b>9.3</b>

Sabine County service area



<b>FORECAST PASSINGS</b>
4,924

<b>FORECAST MILES</b>
579



## Charter Organization & Planning



- **Dedicated RDOF Construction Teams** – Six build teams, dedicated design and engineering teams, total projected headcount 249 employees to be on boarded through June. GVP and 6 Regional Construction VP's on board and hiring supporting staff.
- **Complete Labor & Material vendor RFQs** – Walkout, design, pole engineering, construction labor & materials RFQs issued in February and March, ongoing awards in March, April & May. Ongoing preparation for onboarding Engineering and Construction vendors in all 14 states. Thousands of contract employee's to support the project over 7 years.
- **Establish strong 2021 momentum** – Field mapping commenced in February, Design and Pole engineering begins in April. Projected material arrival and construction begins in 3Q of 2021. Objective is to achieve greater than 1,500 miles per month run rate by mid-2022.
- **Program alignment and project linkages** – Staffing and activity alignment with Government Affairs, Legal, Customer Ops, Supply Chain and Marketing to support the project activity through 2027.
- **Real Estate Planning & Space Acquisition** – Identify additional warehouses and technical space requirements. Map long term expansion needs to support employees and subscriber growth.

# Contact List

---

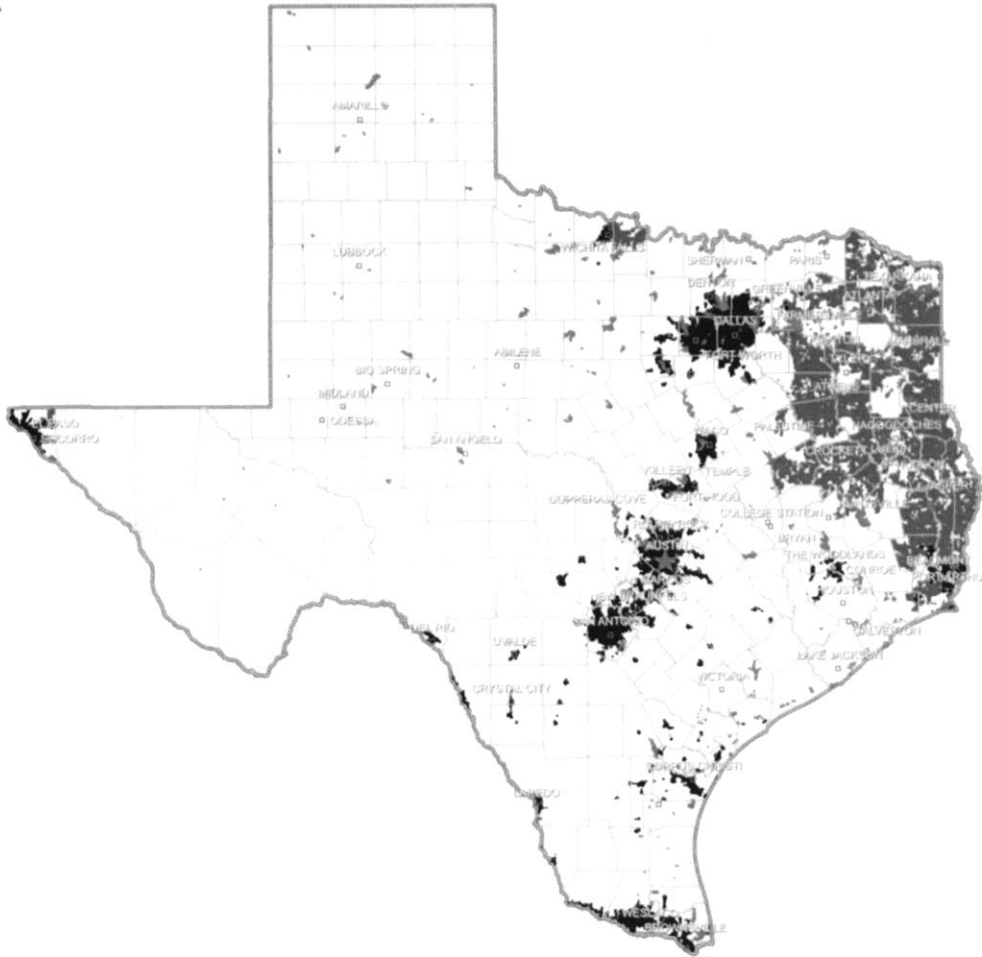
Name	Title	Region	E-Mail Address	Contact Number
Randy Brazell	Dir. Field Eng.	Texas	Randy.Brazell2@charter.com	817-719-5833
Kane Rawson	Maintenance Manager	Texas	Kane.Rawson@charter.com	409-527-1101
Rhonda Anderson	Sr. Manager Govt Affairs	East Texas	Rhonda.anderson1@charter.com	678-977-1833

*marshall*

*TAK*

# TEXAS

## RURAL DIGITAL OPPORTUNITY FUND NETWORK EXPANSION



TX RDOF Total Support	\$362,662,934
Charter RDOF Total Support Won (52%)	\$186,793,360
TX RDOF Support Locations*	310,962
Charter TX RDOF Support Locations*	133,993 (43%)

- CHARTER FOOTPRINT
- CHARTER RDOF EXPANSION
- BODY OF WATER

\* AS ESTIMATED BY THE FEDERAL COMMUNICATIONS COMMISSION